

SUPPORT NETWORK

Experience Our Mobile Service Van For Fast And Reliable Solutions



ADDRESS:

North Zone

ESCORTS LTD. - CONSTRUCTION EQUIPMENT
4th Floor 409, Jasola Vihar,
Elegance Tower, Near Apollo Metro Station,
New Delhi -110019

East Zone

ESCORTS LTD. - CONSTRUCTION EQUIPMENT
Eco Centre, Ambuja Neotia,
609, 6th Floor, EM Block,
Salt Lake Sector-V, Kolkata – 700091

West Zone

ESCORTS LTD. - CONSTRUCTION EQUIPMENT UNIT 1,
3rd Floor, A-Wing, Times Square,
Andheri - Kurla Road, Opp. Mittal Industrial Estate,
Andheri (East), Mumbai 400059 (Maharashtra)

South Zone

ESCORTS LTD. - CONSTRUCTION EQUIPMENT
1st Floor, Bearing No - FF 2, in Subham Square,
Survey Number 41/9, 1st Main Road and 1st Street,
Tarambakkam, Porur,
Chennai - 600116

MKT/21.1/HYDRA1213

WHEN YOU NEED EXTRA **HYDRA1213**



Capacity: 12 T | Boom Height: 42 Feet | Service Interval Engine: 500 hrs. | Straight Axle: Heavy Duty | Transmission: Robust (8+2)



Customer Support No.:
1800 180 4488

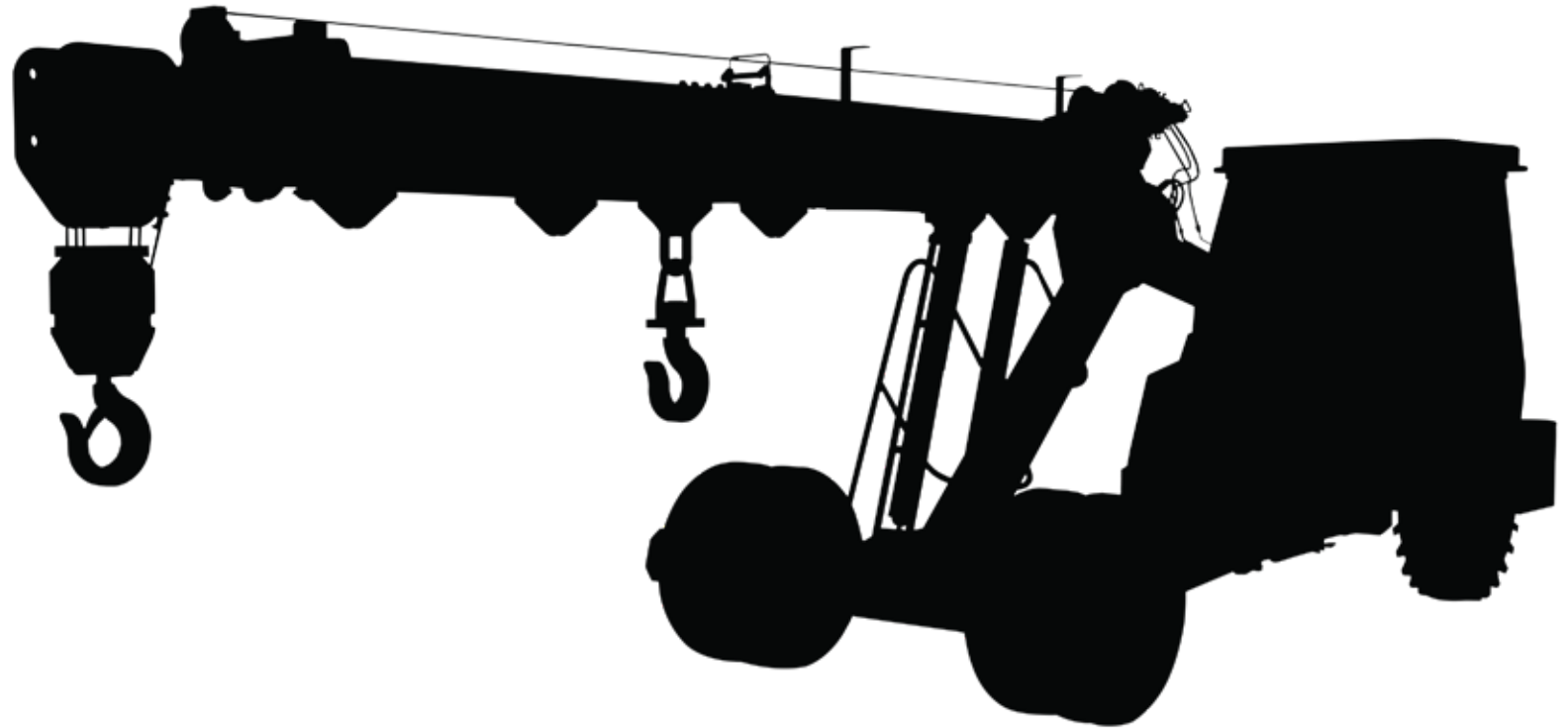
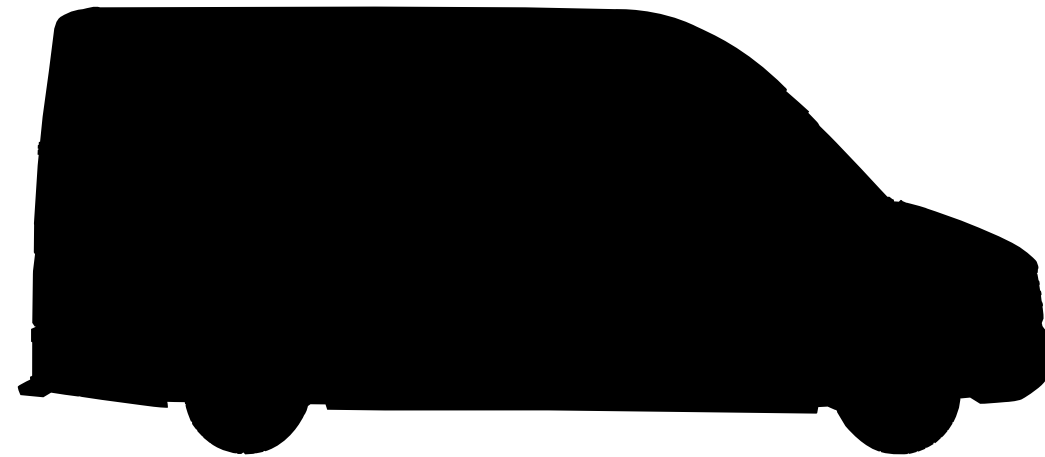
(Timings: 9:30 am - 6:00 pm, Monday to Friday)

E-mail:
ece.marketing@escorts.co.in

Escorts Construction Equipment: Plot No. 219, Sector-58, Ballabhgarh- 121004, Faridabad, Haryana (INDIA) Tel.: 0129-2306574/2306598/2306571
Fax: 0129-2306572 Website: www.escortsgroup.com

ESCORTS WHITE LINE

HYDRA1213



ESCORTS  **WHITE LINE**

SPECIFICATIONS

RATED CAPACITY

12 Tonne at	1.7 m radius
1.4 Tonne at	10.1 m radius

ENGINE

Make & Model	Escorts AE 4.312C-3A Four Cylinder, Water cooled diesel engine developing 49.5 HP @ 2200 RPM or equivalent.
--------------	---

TRANSMISSION

Drive Type	2 Wheel drive Heavy duty transmission developed especially for crane application. Constant mesh gearbox coupled with straight Telescoping drive axle. Eight forward and two reverse speeds with high/low selector lever.
Max. Speed	29 km/hr. (unladen)
Clutch	Heavy duty clutch, wire woven, asbestos free.

STEERING

Type	Articulated power steering, hydraulically controlled through 2 double acting jacks
Articulation	Up to 53°
Turning Radius	6.5 m

HOIST MECHANISM

Hoist	Hydraulic winch. Four falls. Rope dia 13 mm
-------	---

BRAKES

Front Wheel	Pneumatic assisted hydraulic brakes
Rear Wheel	Disc brakes actuated through a slave cylinder
Parking	Hand control valve operated, Air assisted Hydraulic parking brakes at rear wheels (Standard models) Hand control valve operated, Air assisted Parking brakes at Front wheels (with Air brake models)

HYDRAULIC SYSTEM

Pump Control Valve	Vane type hydraulic pump
Control Valve	4 spool control valve with built in pressure relief valve and precision control
Hydraulic Filter	Suction line has a 100 mesh inline strainer while return line has 25 microns full flow filter

ELECTRICAL SYSTEM

Type	12V Single battery, Negative earth
------	------------------------------------

CAPACITIES

Fuel Tank	45 ltrs.
Hydraulic Tank	65 ltrs.

OPERATING WEIGHT (KG)

10650 kg

TRACK

Front	1930 mm
Rear	1680 mm

OVERALL DIMENSIONS

Length	11900 mm
Width	2550 mm
Height	3100 mm

BOOM

Telescoping	3 parts hydraulically powered & fully synchronized slotted boom
Derricking	Through double acting jacks

TYRES

Front	10.00 X 20 -16 PR (4 nos.), inflation pressure 110-115 PSI
Rear	13.00 X 24 -12 PR (2 nos.), inflation pressure 35 PSI. Water ballasted

SAFETY SYSTEM

- Overload audio warning system
- Safety brakes on hoist
- Cylinder guard for protection
- Rope compensation for auto leveling
- Counter balance protection valve in the lift against hose burst
- Visual warning against parking brakes
- System Low air pressure warning buzzer

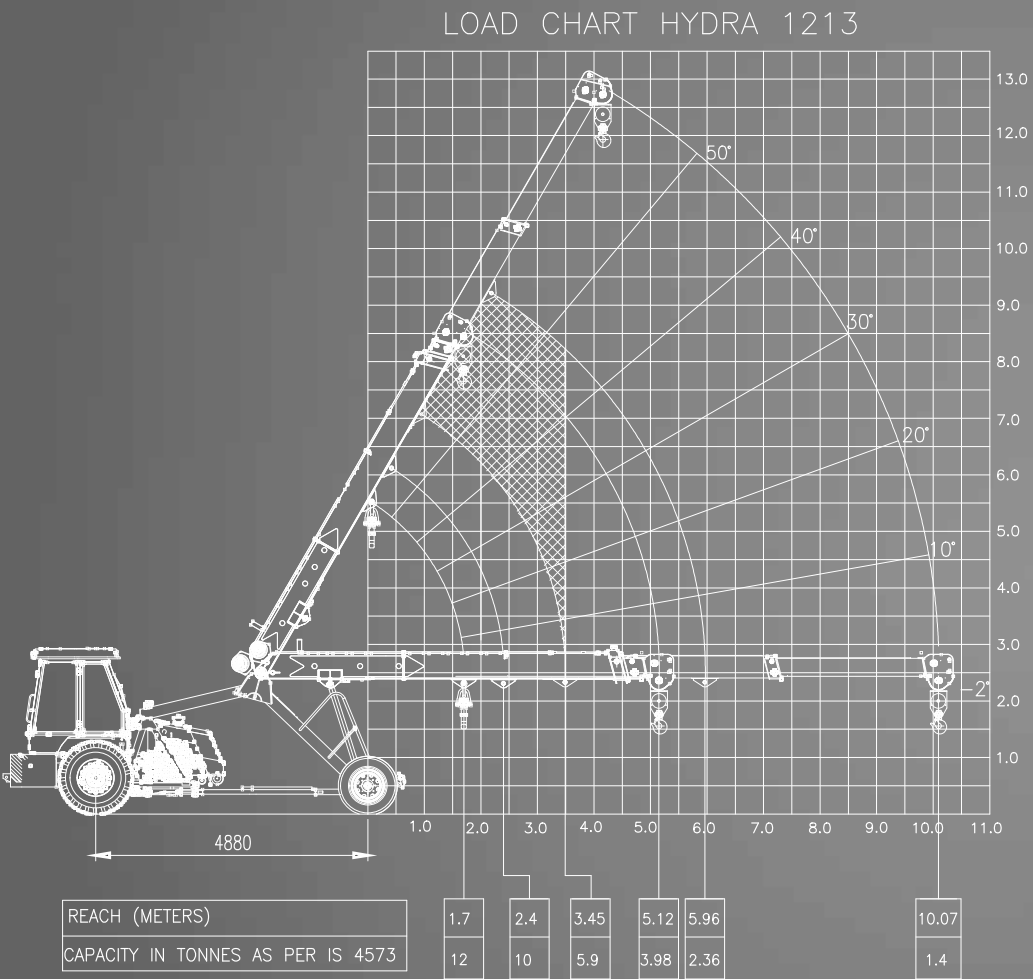
STANDARD ACCESSORIES

- All Weather Cabin
- Lift Cylinder Guard
- Turn & Reverse Lamp
- Front Bumper
- Rear View Mirror
- Reflectors

OPTIONAL ACCESSORIES

- Tool Box
- Spark Arrestor
- Steering Wheel
- Fire Extinguisher
- Safe Load Indicator
- Heavy Duty Bumper
- 14 x 24 Heavy Duty Tyres
- Air Brakes on Front Wheel
- Over Hoist & Hydraulic Cutoff Kit

PERFORMANCE, DIMENSIONS & FEATURES



SLOTTED BOOM AND ROPE COMPENSATION

Slotted boom & rope compensation helps in improving the load positioning & auto leveling of loads.



ENGINE

Escorts engine BS-III (CEV compliant) high on power/ torque & low on fuel consumption & maintenance.

TRANSMISSION

Heavy duty straight axle with constantmesh 8+2 transmission.



CABIN

Ergonomically designed spacious cabin with modern dashboard for utmost operator comfort and operation.

INCREASED STABILITY

At fully articulated condition. Wider lift cylinders' span (400 mm).